

APPLICANT

MAXIMUS OPERATING, LTD.

Greenwood-Waskom Field

CADDO PARISH, LOUISIANA

Docket No. 17-410
Proposed Unit Terminations
Harkrider Sand

Docket No. 17-421
Unit Confirmation
Travis Peak Zone, Sand Unit 99

August 8, 2017

Witness: Bryan S. Groves

prepared by

BRYAN GROVES

OIL & GAS GEOLOGIST

UNITIZATION / 3-D INTERPRETATION

www.bryangrovesgeology.com

PLYMOUTH OIL CO.
HEROLD UNIT No. 3
SEC. 13, T 17 N - R 16 W
SN: 51901

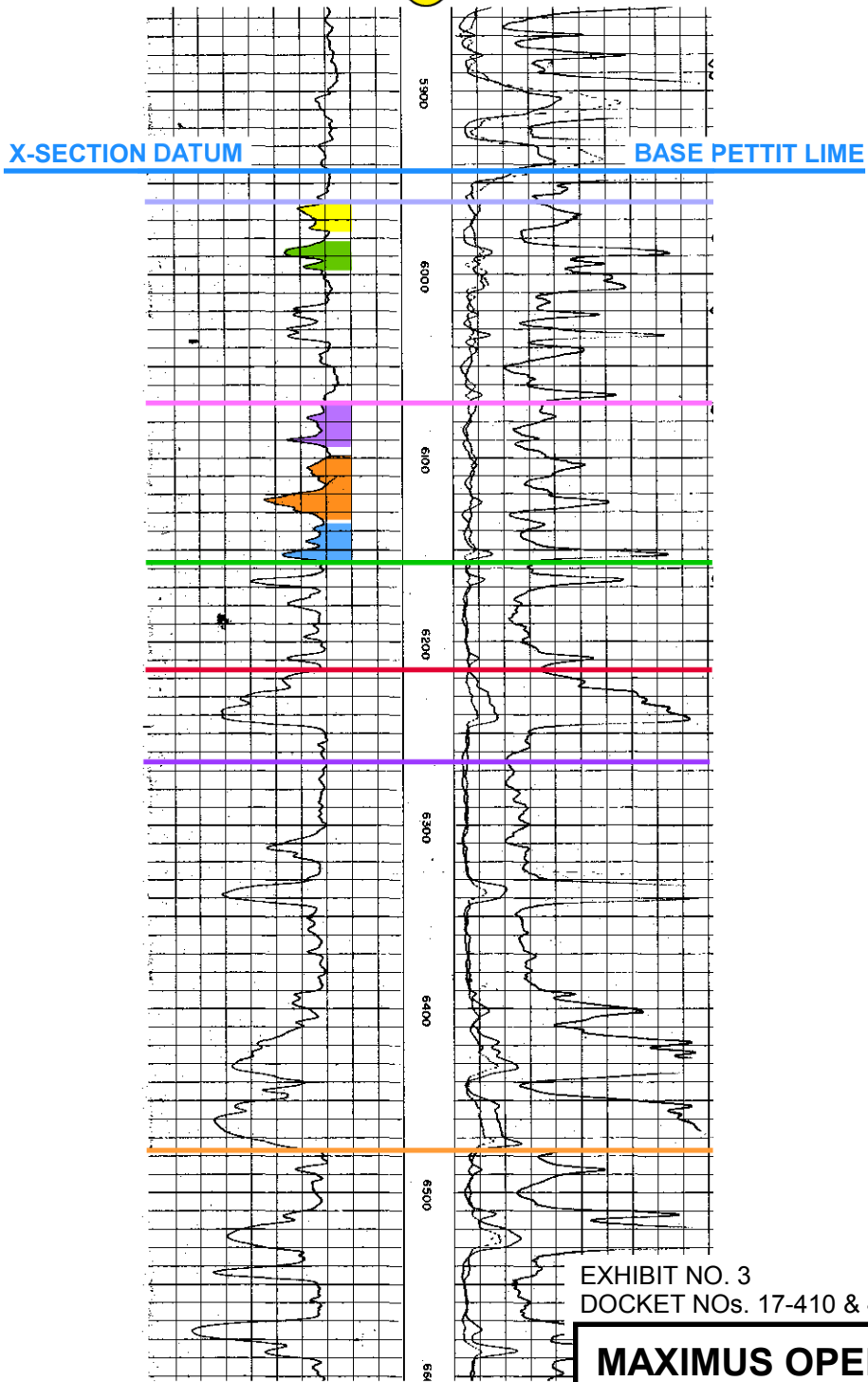


EXHIBIT NO. 3
DOCKET NOS. 17-410 & 421 DATE: 8-8-17

Comp. 6-9-54
Perfs. 8518-68 (Cotton Valley "D")
I.P. 20500 MCFD + 416 BOPD

MAXIMUS OPERATING, LTD.

GREENWOOD-WASKOM FIELD
CADDO PARISH, LOUISIANA

Correlation Section
A-A'

BRYAN GROVES
OIL & GAS GEOLOGIST

UNITIZATION / 3-D INTERPRETATION

www.bryangrovesgeology.com

BRYAN GROVES
OIL & GAS GEOLOGIST
www.bryangrovesgeology.com

R 16 W

R 15 W

11

12

7

Marathon Herold 1 21
2950' 6400'

A1
2725'

2
3805'

3
3814'

1
3754'

K. S. & C. J. Phagan

15383' MD
11066' VD

1
3816'

7
2645'

2
3810'

1
3761'

Mary F. Dinwiddle

3
3922'

8(2)
(3817')
2595'

2
3848'

T
17
N

14

**HARKRIDER SAND UNITS
ORDER No. 270-D
Eff. 8-1-56**

2
2672'

4
3837'

17
3850'

18

1
3815'

1
3753'

**PROPOSED UNIT
TERMINATION
(40 acres)**

Eugene F. Dunn, et al
ORDER No. 270-D

**PROPOSED UNIT
TERMINATION
(40 acres)**

ORDER No. 270-D

13

18
3895'

**PROPOSED UNIT
TERMINATION
(40 acres)**

Opal J. Dunn Trustee
ORDER No. 270-D
Mrs. O. J. Dunn

**PROPOSED UNIT
TERMINATION
(40 acres)**

ORDER No. 270-D

Herold-Winks-Wallhonrat, et al

Sidney L. Herold, et al

1
3827'

A. W. Dunn, et al

1
2552'

Isham R. Dunn, et al

Emma R. Dunn, et al

1
3890'

SL

19

1
2842'

Herold-Winks-Wallhonrat, et al

BHP Billiton (Petro-Hawk)
HA RA SUB 4, HWY Paige 244+-1

23

Ross Dunn
1
6500'

Johnson Dunn
1
6225'

Key (Plymouth) Dunn
A-1
8617'

Arthur W. Dunn, et al

24

Barnwell Herold
1
6190'

EXHIBIT NO. 1
DOCKET NO. 17-410

DATE: 8-8-17

MAXIMUS OPERATING, LTD.

GREENWOOD-WASKOM FIELD
CADDO PARISH, LOUISIANA

**PROPOSED UNIT TERMINATIONS
ORDER NO. 270-D**

Harkrider Sand

0 1000' 2000'

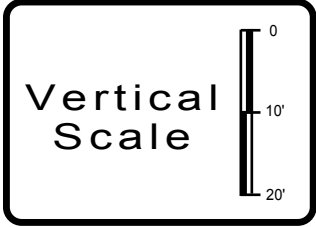
BRYAN GROVES
OIL & GAS GEOLOGIST
www.bryangrovesgeology.com

BRYAN GROVES
OIL & GAS GEOLOGIST

UNITIZATION / 3-D INTERPRETATION
www.bryangrovesgeology.com

Ross Dinwiddle
1
6500'

5" LOG
Serial No. 239089
BHP BILLITON (PETROHAWK)
S. L. HEROLD 13 No. 1
SEC. 13, T 17 N - R 16 W



TOP 6017' ELD

TRAVIS PEAK ZONE

BASE 6297' ELD

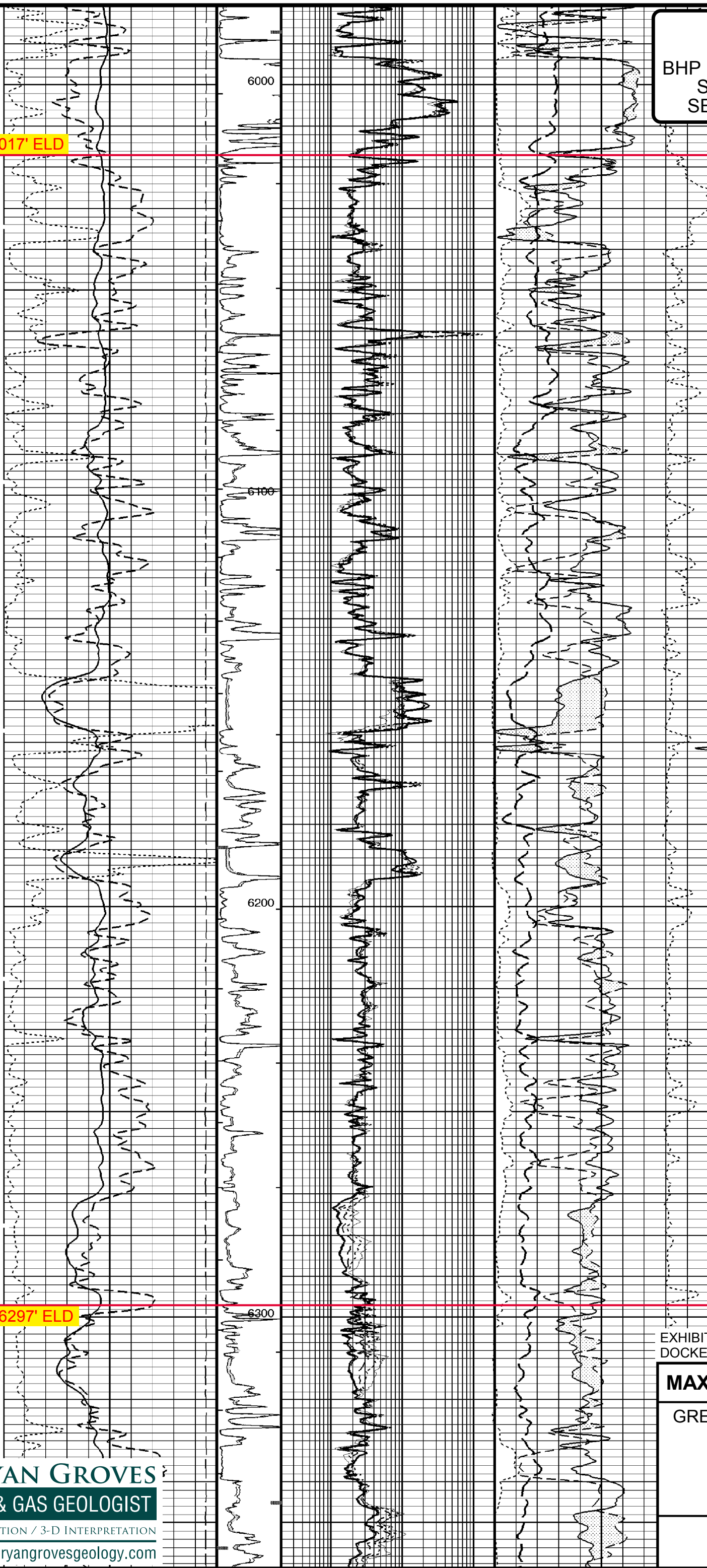


EXHIBIT NO. 1
DOCKET NO. 17-421
DATE: 8-8-17

MAXIMUS OPERATING, LTD.
GREENWOOD-WASKOM FIELD
CADDO PARISH, LOUISIANA
ZONE DEFINITION LOG
Travis Peak Zone

BRYAN GROVES
OIL & GAS GEOLOGIST
UNITIZATION / 3-D INTERPRETATION
www.bryangrovesgeology.com

BRYAN GROVES
OIL & GAS GEOLOGIST
www.bryangrovesgeology.com

R 16 W

R 15 W

Pettit Lime
Travis Peak Zone
Rodessa-Hill
CV Zone "D" Sd.
ORDER No. 270-1
Eff. 8-1-54

11

12

7

Marathon
Herold 1, 2, 21
2950' 6400'

2
3805'

3
3814'

1
3754'

K. S. & C. J. Phagan

TP SU 99
UNIT CONFIRMATION
ORDER 270-1
+/-640 ACRES

15383' MD
11066' VD

3
3922'

8(2)
(3817)
2595'

1
3816'

7
2645'

Mary F. Dinwiddle

2
3810'

1
3761'

3
3850'

1
1090'

4
3837'

2
2672'

17
3850'

2
3848'

T
17
N

14

John C. Dunn

13

18

1
3815'

2
3830'

16
3871'

18
3895'

1
3753'

Eugene F. Dunn, et al

1
2950'

1
2981'

1
3827'

1
3858'

Opal J.
Dunn
Trustee

Mrs. O. J. Dunn

Herold-Winks-Wallhorrat, et al

Sidney L. Herold, et al

A. W.
Dunn, et al

1
2552'

Isham R.
Dunn, et al

Emma R. Dunn, et al

1
4951'

1
2842'

Herold-Winks-Wallhorrat, et al

1
3890'

BHP Billiton
PA SUB, HWY Paige 244+1
HA RA SUB, Herold 13-1

19

23

Ross
Dunn
1
6500'

Johnson
Dunn
1
6225'

Key
(Plymouth)
Dunn
A-1
8617'

Arthur W. Dunn, et al

24

Barnwell
Herold
1
6190'

Ross
Dinwiddle
1
6500'

EXHIBIT NO. 2
DOCKET NO. 17-421

DATE: 8-8-17

MAXIMUS OPERATING, LTD.

GREENWOOD-WASKOM FIELD
CADDO PARISH, LOUISIANA

UNIT CONFIRMATION (ORDER NO. 270-1)

Travis Peak Zone

0 1000' 2000'

BRYAN GROVES
OIL & GAS GEOLOGIST
www.bryangrovesgeology.com

BRYAN GROVES
OIL & GAS GEOLOGIST

UNITIZATION / 3-D INTERPRETATION

www.bryangrovesgeology.com